

PANDUAN INSTALASI PROGRAM RETURN : (perhatikan panah hijau)

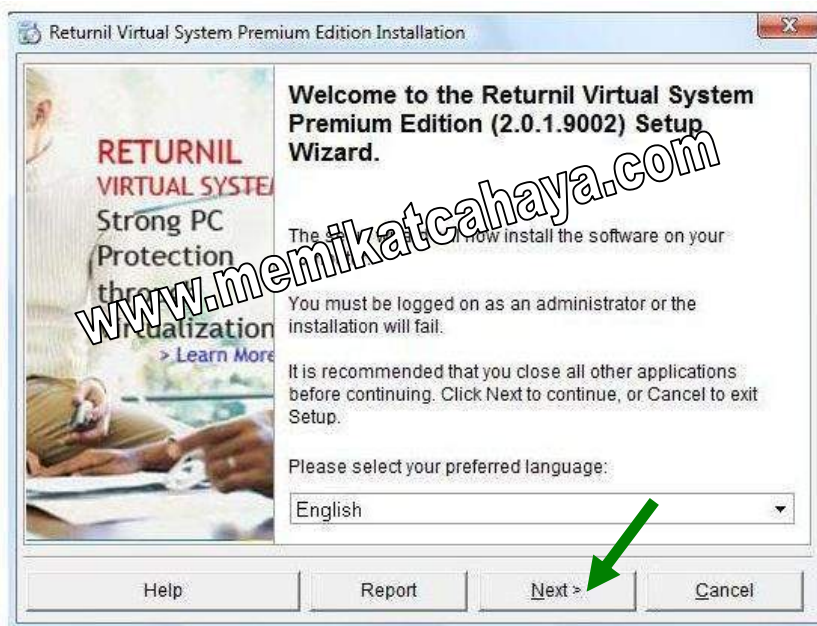
Step 1: Start installation



Return.exe

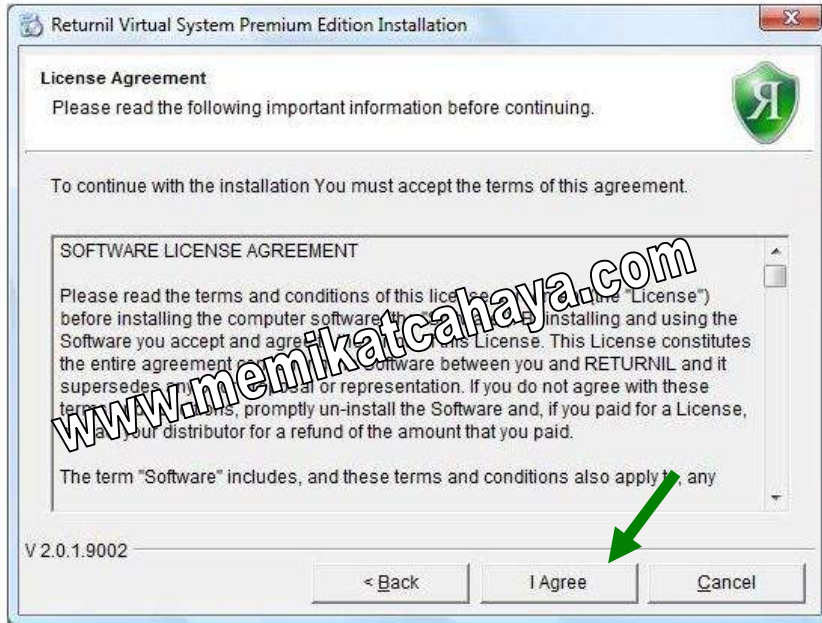
Double-click on the "Return.exe" file to start the installation

Step 2 : Welcome Screen



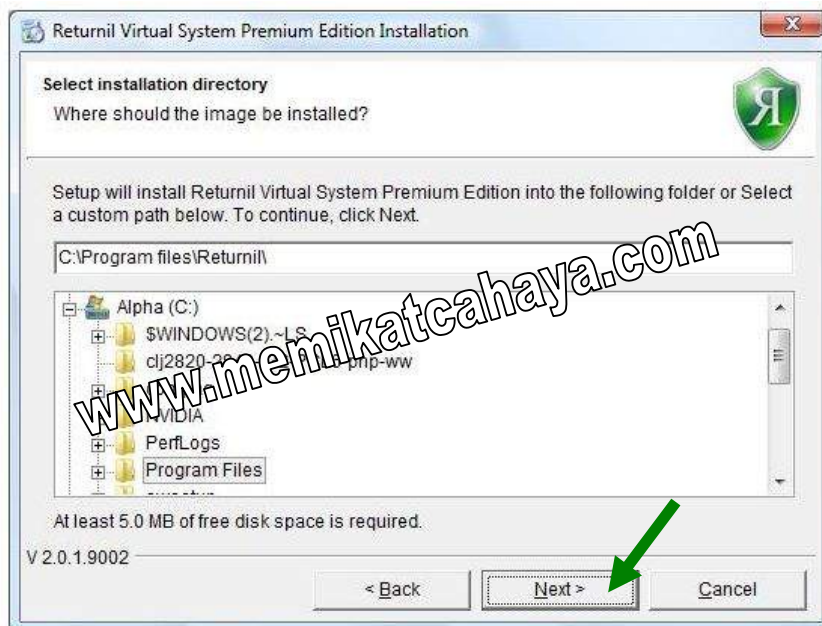
Note: Before proceeding, please select the appropriate language from the drop down menu; then click **Next** to continue to the license Agreement Screen, **Cancel** to exit Setup, or **User's Manual** to open the help file.

Step 3: End-User License Agreement (EULA)



IMPORTANT: Please read the license agreement in its entirety before you proceed. When you have completed reviewing the agreement, click **I Agree** to continue with the installation of the software, **Cancel** to exit setup, or **Back** to change your language preference before proceeding to the next step.

Step 4: Choose the installation directory



Use the default installation directory as shown above, or select a custom path to install the software. Once you are satisfied, click **Next** to continue with the installation, **Cancel** to exit setup, or **Back** to return to a previous screen.

Step 5: Fill in your registration information for this program by entering your purchase Serial Number. If you are a trial user, leave this blank and click Next to continue with the installation process or Buy Now to purchase a registration Serial Number.



Note: The Serial Code is created automatically when installing the software and is unique to each installation regardless of whether this is a fresh install or an upgrade.

Step 6: Optional Settings

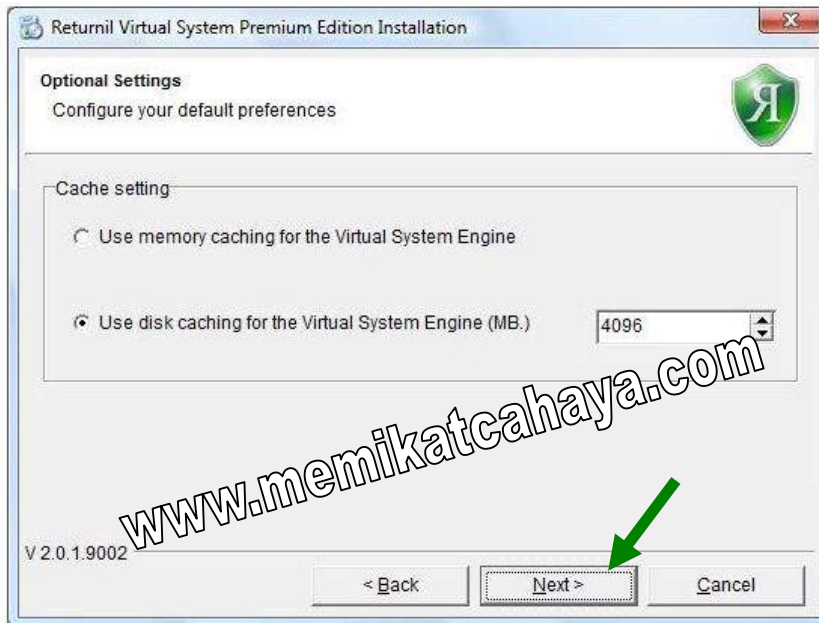


- **Restrict program access** - If you do not wish to enter or use a password to lock changes to your chosen configurations, simply leave this section blank and click Next to continue with the installation. You can enter this information at any time using the Password Settings section of the Main Screen.

- **Enable Protection on your system partition (X:\) after installation** - This will force the System Protection feature to be activated at Windows boot for all accounts on the computer OR, for Multi-boot systems, all accounts on the appropriate system partition.
- **Disable System Protection while in Windows Safe-mode** - As the name suggests, activating this option will turn OFF System Protection regardless of the current Protection Mode.
- **Show toolbar on the desktop** - Activate this option if you want to use the desktop toolbar. The toolbar can be used with the Tray Icon or by itself at your preference.
- **Show program icon in the tray area** - activate this option if you want the tray icon to be displayed. The tray icon can be used with the toolbar or by itself at your preference.

Once you are stratified with your selections, click **Next** to continue with the installation.

Step 7: Select Caching Mode

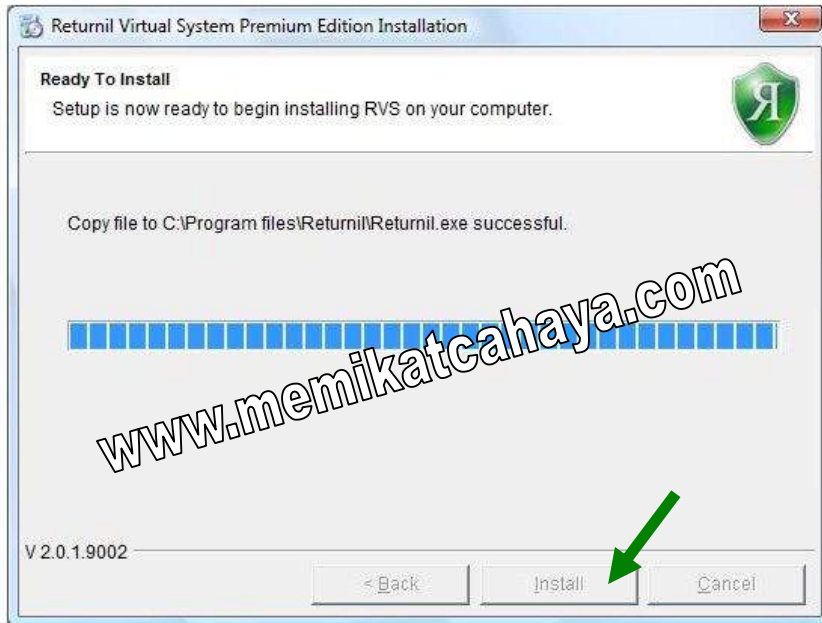


NEW! Returnil 2008 Premium supports different caching methods to allow change commit to disk.

- **Use memory caching for the Virtual System Engine** - Your System Partition will be cloned in memory.
- **Use disk caching for the Virtual System Engine** - Your System Partition will be cloned on your hard disk drive.

Note: While memory caching is stable and reliable, it may introduce the potential for file damage when working with extremely large files or a large quantity of files. Though a slower process, we recommend using disk caching if you anticipate this type of use. Please be sure to allow adequate space for both the Cache and a Virtual Partition if you plan to use that feature.

Step 8: Start Installation



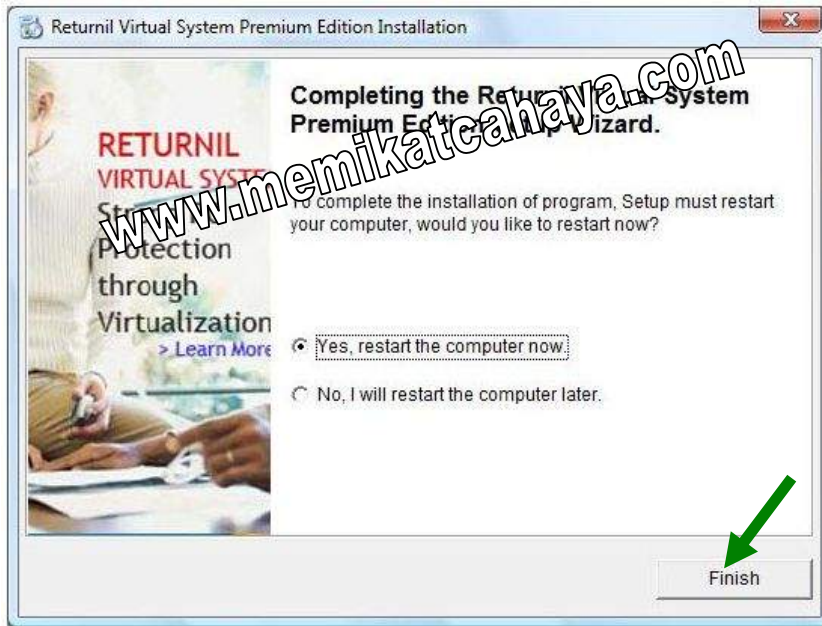
Click **Install** to start installing the Returnil Virtual System onto your computer. As the files are copied you will see a confirmation that the installation was successful.

Step 9: Creating your Virtual Partition



To create the Virtual Partition and continue with the setup process click **Create**. If you do not wish to use this feature click **Skip** and proceed to **Step 10**, below. This is an automated step and does not require any user input. As no computer has an identical configuration to any other computer outside of a lab environment, the time to complete this step depends on your system's limitations and the size you have chosen for the drive. Please be patient...

Step 10: Completing the installation



To complete the installation you must reboot your computer. You can however delay this final step by selecting **No, I will restart the computer later** and click the **Finish** button. To restart immediately, simply click the **Finish** button.